

Location	5 Kingston Park Court Knoxfield
Architect	James W Saddler Pty Ltd
Builder	Kingston Property Constructions
Installer	Precedent Insulated Panels
Application	External Walls

Chainsaw and horticultural equipment manufacturer, Stihl, have recently completed their new national headquarters in Knoxfield, Victoria. In line with their international specifications, Bradcore's Paroc panels were specified for the external façade.

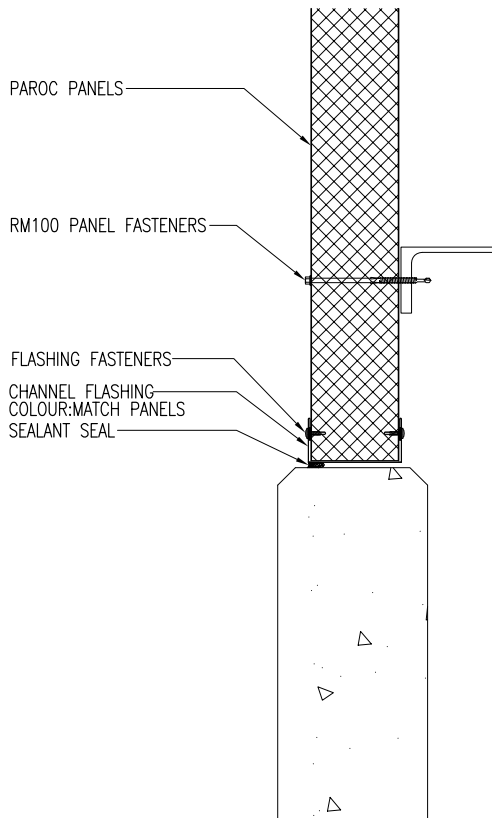
In the past, a building of this type would have usually been constructed with concrete panels. Stihl chose the Paroc panels due to their high insulation values, good looks and high reflectivity, which reduces the requirement for lighting and further reduces energy use. The fact that the panels are pre-finished also saved a number of trades on site.



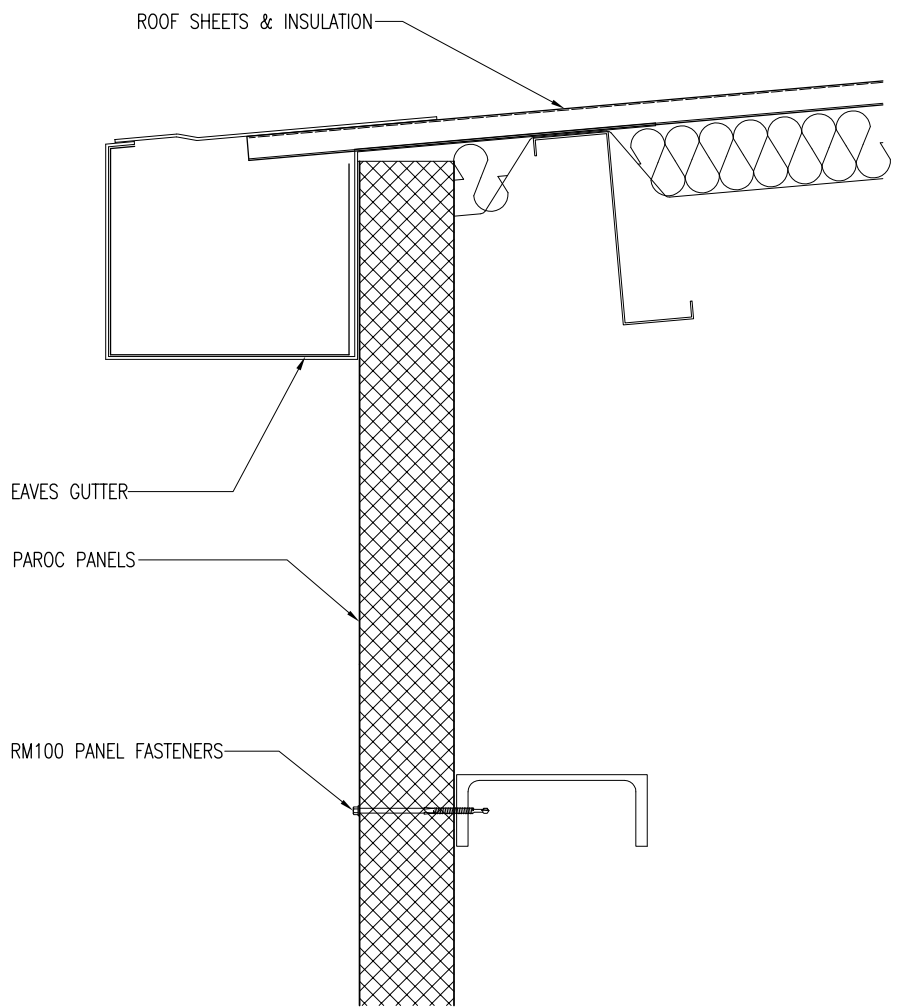
The external walls were formed using vertically installed panels above a concrete dado wall with single spans of 7.1m and 8.4m.

Over 1900m<sup>2</sup> of 100mm thick Paroc 75C smooth profile panels were used on the project and a silver colour was chosen due to its high reflectivity.

Paroc panels have helped deliver a great looking façade for the new national headquarters for Stihl.



BASE OF WALL DETAIL



TOP OF WALL DETAIL

No.PS07

**bradcore**<sup>™</sup>  
panel systems

Free call inside Australia **1800 023 360**  
Free call inside New Zealand **0800 227 123**  
Email [bradcore@csr.com.au](mailto:bradcore@csr.com.au)  
[www.bradcore.com.au](http://www.bradcore.com.au)

