

**LOCATION** Queensland Cultural Centre, South Brisbane, Queensland

**ARCHITECT** Donovan Hill

**BUILDER** Bovis Lend Lease Pty Ltd

**INSTALLER** Retracom

**APPLICATION** Exterior and interior fire proof panels

The \$308.5million Millennium Arts Project is the largest capital works project in the arts since the original Queensland Cultural Centre development almost 30 years ago.

Due for completion in 2006, the Millennium Arts Queensland Cultural Centre redevelopment at South Bank includes the creation of a new Queensland Gallery of Modern Art, the redevelopment of the State Library of Queensland, and new public recreational and outdoor spaces. The project also includes a new entrance for the Queensland Museum.



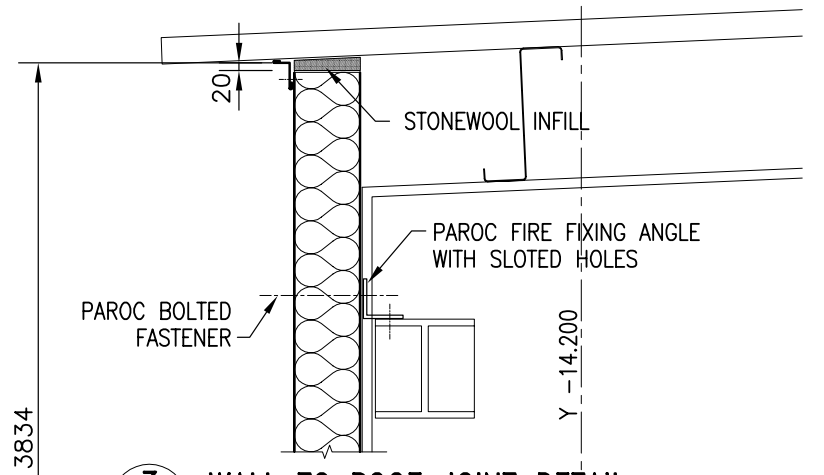


Given the valuable nature of the contents of the repository of the Gallery of Modern Art every precaution had to be taken to protect them. The exterior walls had to be fireproof and well insulated to minimize temperature differences, which could have a deleterious effect on the artworks.

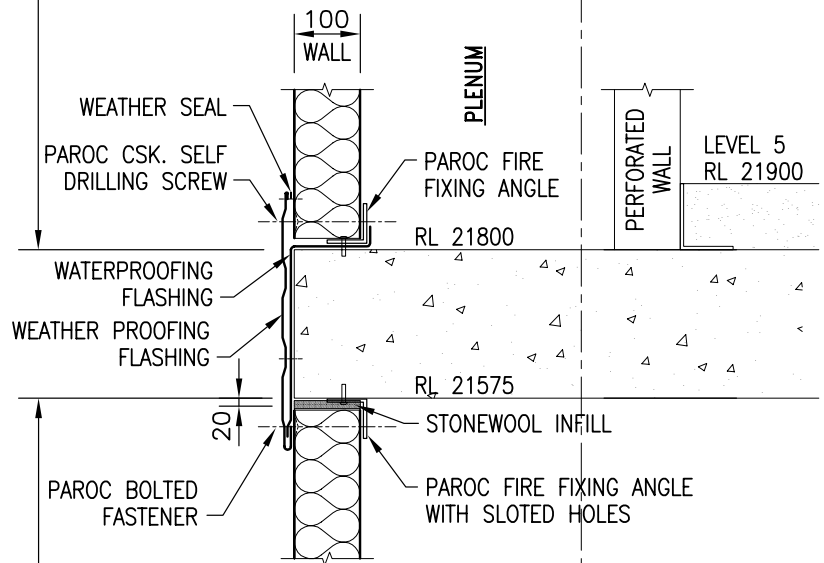
Having considered a range of options, Bradcore's rock wool cored panels were specified to provide a 2 hour fire rating on both the external walls of the repository and on two internal fire proof cool rooms designed to store special items.

The project required 1750m<sup>2</sup> of Paroc 75F 100mm thick panels with a span length of 3.80m. These panels met the 2 hour fire rating requirement whilst providing an R-Value of R2.27.

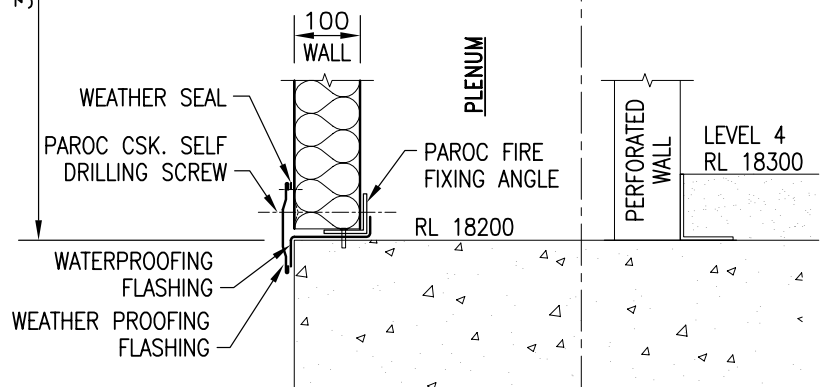
The rockwool panels not only met the performance requirements, they also saved time in construction due to their long span and simple installation.



**3**  
**2** WALL TO ROOF JOINT DETAIL



**2**  
**2** WALL TO CONC. FLOOR JOINT DETAIL



**1**  
**2** WALL TO CONC. FLOOR JOINT DETAIL

No.PS03