

**LOCATION** Burbank Corporate Centre, Norwest Business Park, Baulkham Hills, NSW

**ARCHITECT** Leffler Simes Architects

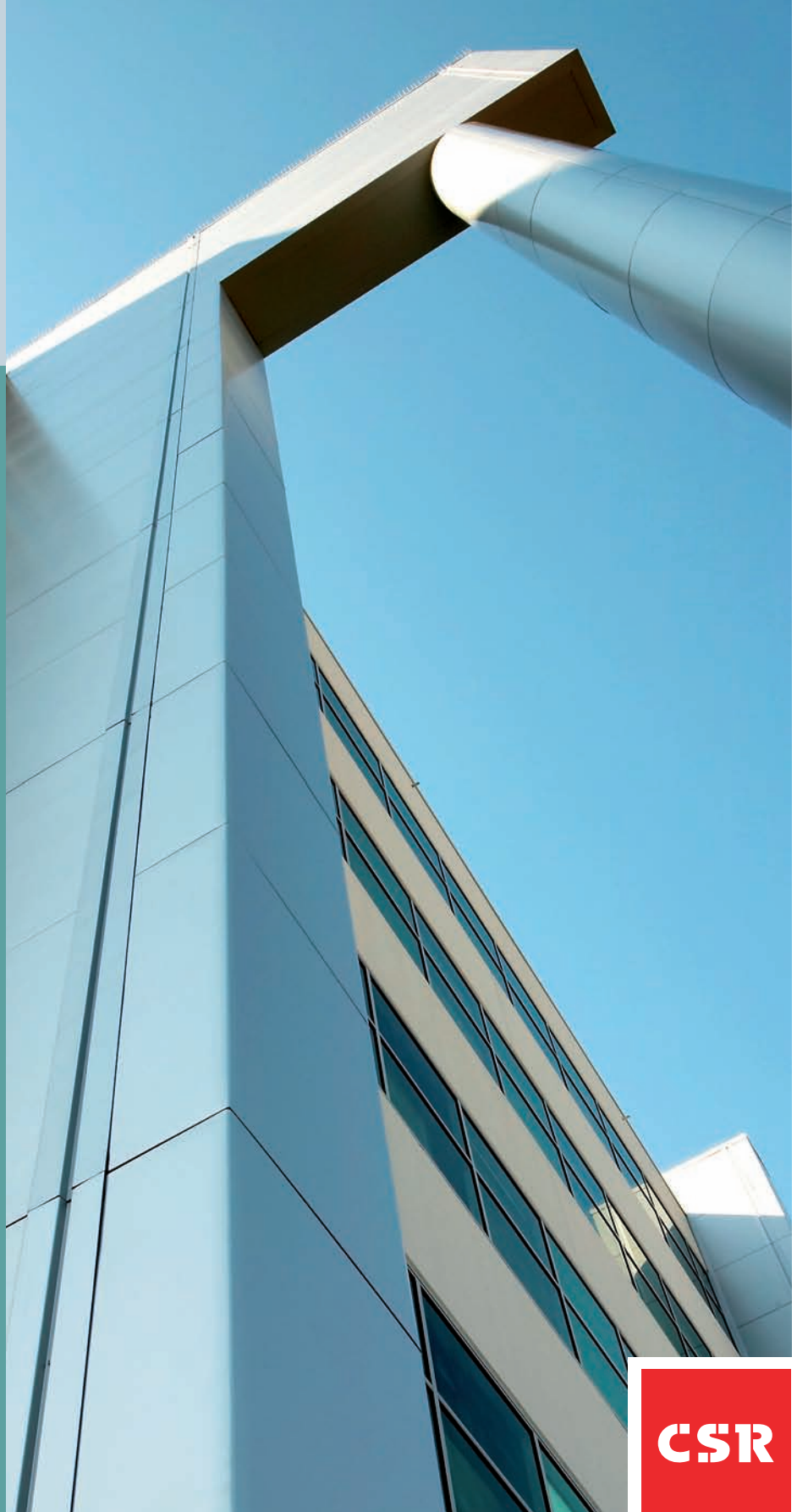
**BUILDER** Grant Constructions

**INSTALLER** Nordex Panel Systems

**APPLICATION** External Walls

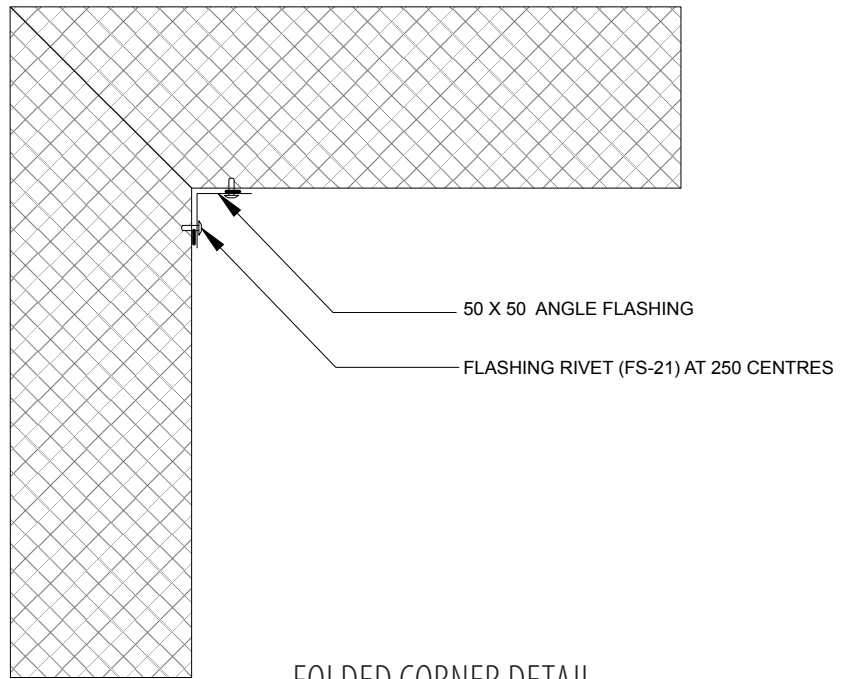
Burbank Corporate Centre is a new commercial development in Norwest Business Park, Baulkham Hills, one of the fastest growing residential and business communities in Australia.

The design called for a prestigious looking façade and having considered a range of options, Bradcore's Paroc panels were specified for their finish and their ability to reduce flashings with the use of folded corners.

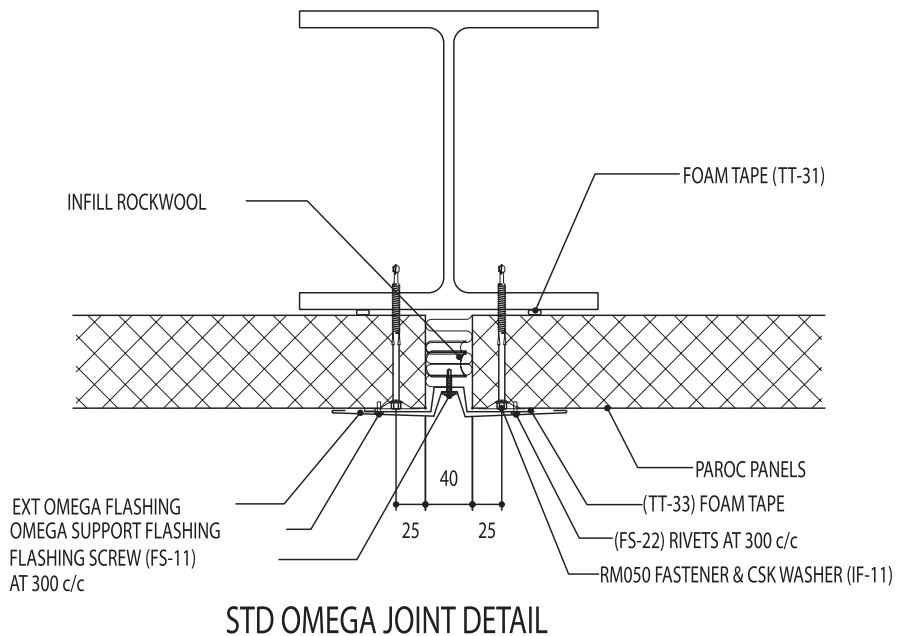


Silver and brown panels were used on external feature blade walls and also for cladding on the western balcony walls. The project required 1900m<sup>2</sup> of 50mm panels complimented by corner panels providing long spans and a flat metallic appearance and clean corners similar to high end aluminium composite systems.

The panel's long spans required less structural steel and the ease of installation led to savings in both time and money during the construction phase of the project.



FOLDED CORNER DETAIL



STD OMEGA JOINT DETAIL

No.PS05

**bradcore**<sup>TM</sup>  
panel systems

Free call inside Australia **1800 023 360**  
Free call inside New Zealand **0800 227 123**  
Email [bradcore@csr.com.au](mailto:bradcore@csr.com.au)  
[www.bradcore.com.au](http://www.bradcore.com.au)

